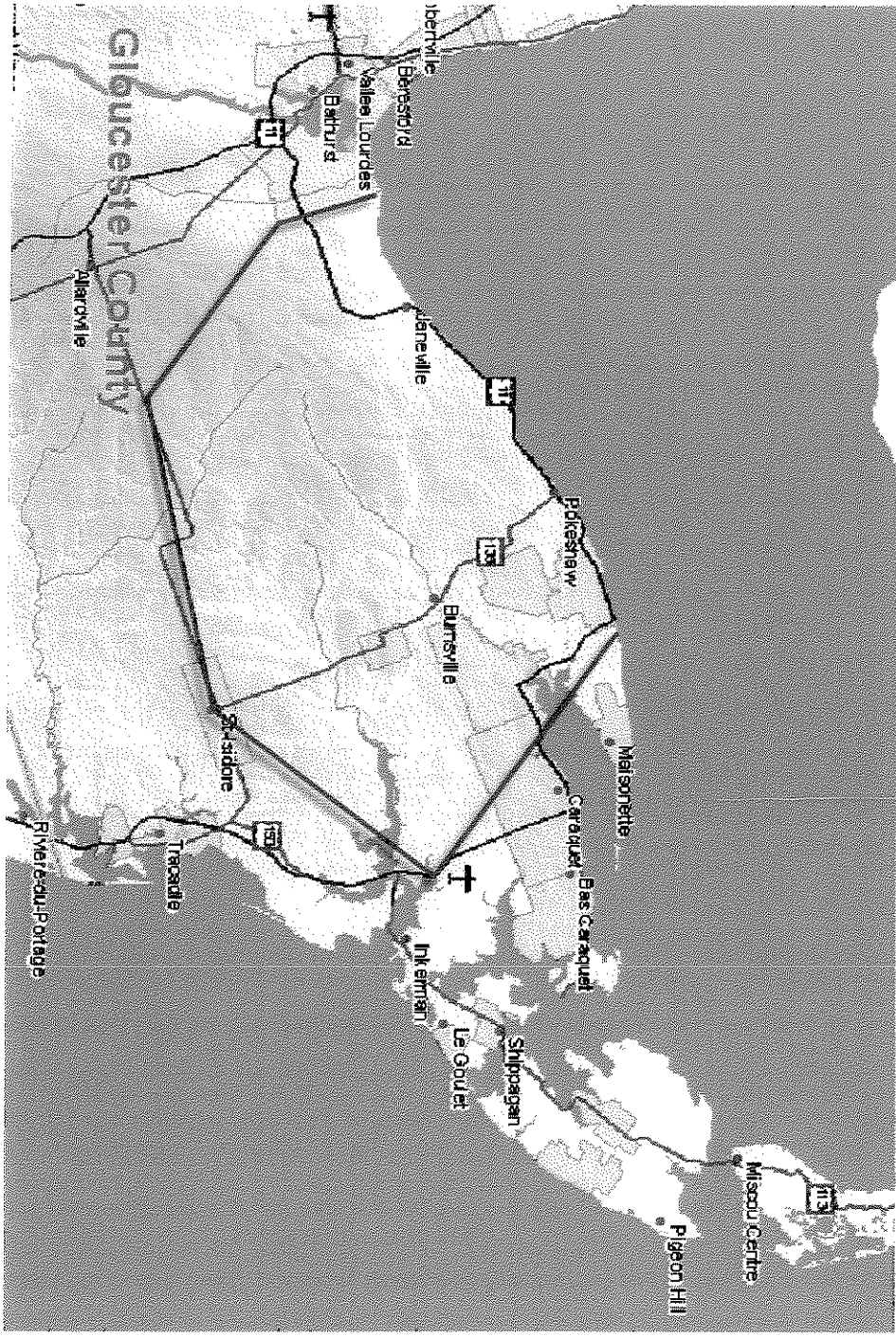


Community Response Sustainability Study: Janeville Elementary School



November 2015



Agenda

- Introduction - Jamie Knowles
- Low/Declining enrolment – Sue Nicol
- Economic development - Sue Nicol
- Health and Safety - Nisha Ellis Silver
- Finances - Keith Daley
- Quality of Education Programs and Services - Jamie Knowles
- Impact On Other Schools - Jamie Knowles
- Transportation - Vicky Sealy / Brad Calnan / Kirsten Miller
- Impact on the Local Community - Hanson Miller
- conclusion - Kathleen Knowles Ellis
- Questions
- Community - Penny Morrison
- Community – MLA Denis Landry

Introduction

- Policy 409 - 6.4.2
- A DEC will advise the Minister in writing when it intends to study a school's sustainability. This study can include one of several outcomes: maintaining the status quo, repairing the school or closing the school and placing students elsewhere.
- Policy 409:
 - Also targets small schools for closure.
 - Is an attack on a rural way of life common in New Brunswick.
 - It's an old policy with a new name.

Introduction

- DEPARTMENT OF EDUCATION AND EARLY CHILDHOOD DEVELOPMENT
- POLICY 409
- Subject: Multi-year School Infrastructure Planning
- Effective: September 1998
- Revised: May 2002, December 2009, March 2015
- 1.0 PURPOSE
- This policy defines the process for multi-year school infrastructure planning to ensure a strategic and long-term approach to major capital projects, capital improvement projects, the study of a school's sustainability and proposed grade reconfigurations.
- This policy is a revision of Policy 409 – Closure of Schools.
- This policy replaces Policy 401- Naming of Schools (repealed).

Introduction

- Policy 409 criteria to be considered
1. Low/Declining enrolments
 2. Health and Safety
 3. Quality of Education Programs and Services
 4. Transportation
 5. Finances
 6. Impact on the local community
 7. Impact on other schools
 8. Economic development

Introduction

- 6.5.3 The DEC will ensure that affected persons:
 - are provided with information relevant to the proposal;
 - have adequate time to consider the information provided; and,
 - have adequate time and opportunity to make a presentation to the DEC
- May 25 the ASD-N DEC voted to conduct a sustainability study.
- District staff have been working on these reviews for 4 months.
- Parents heard the district's presentation Sept 29th, we've had 5 weeks to prepare for tonight, we all have jobs, we are all parents. Is this adequate time?

Introduction

No district employees can be part of this community response.

- Of current students, 9 parents cannot participate tonight.
- Looking at students who moved on to middle school this year, 3 more parents who are active in the community cannot participate.
- Who would be better qualified to speak about our community, our school and our childrens' education than these parents, who are also teachers?

Introduction

- In the 2014-15 school year, 1 teacher drove from Bathurst to Janeville to work. This teacher brought their child to Janeville to be educated.
- 5 other teachers who live in the Janeville area drove to Bathurst to work. Their children stayed in Janeville to go to School.
- While the teachers can't speak tonight, their actions have told us what they think about the quality of education at Janeville Elementary School.

Introduction

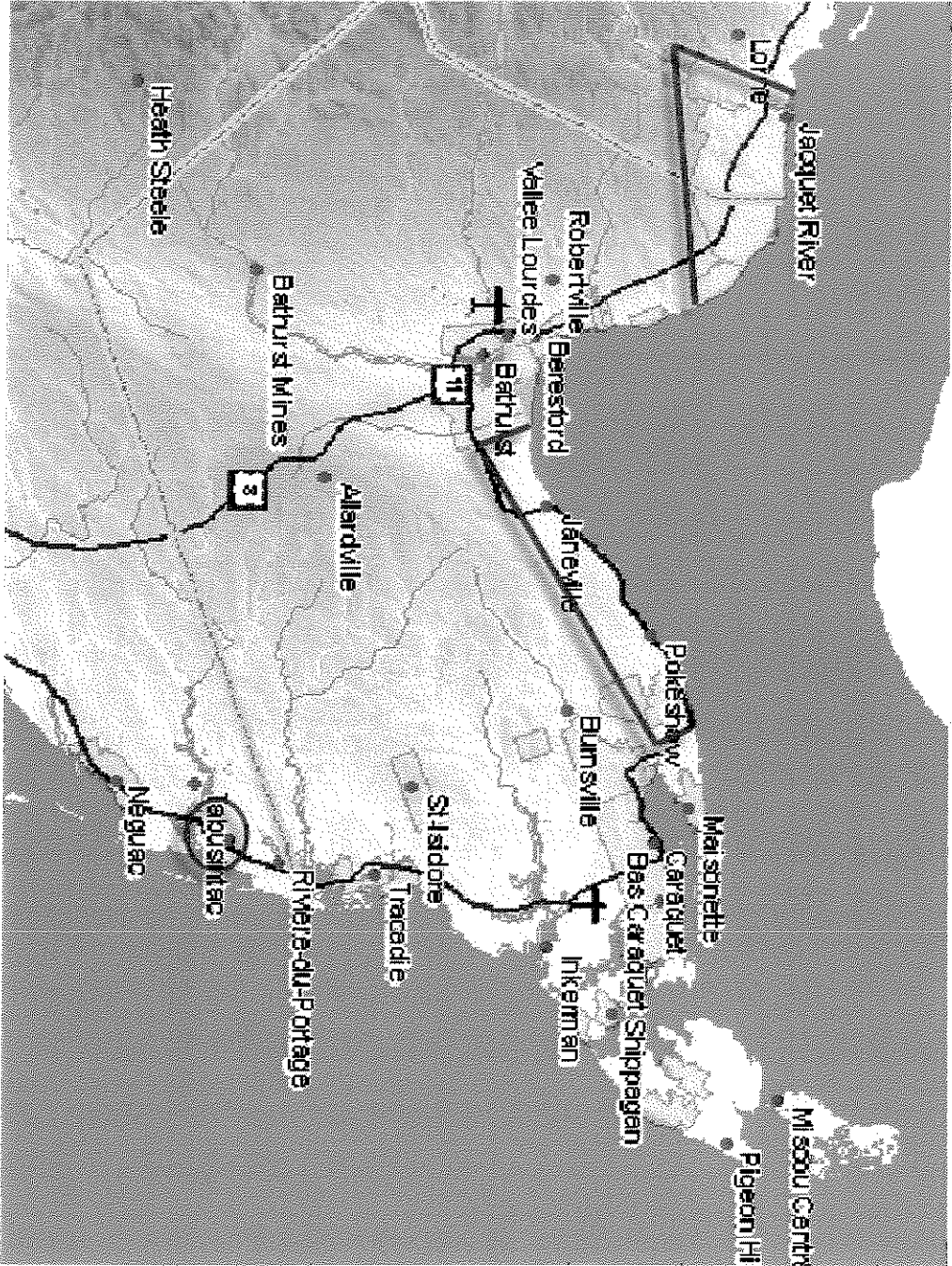
- District presentations main focus was on the numbers:
 - Low enrolments
 - Millions of dollars to fix the older schools
 - Low teacher to student ratios
 - High cost per student figures
- These topics only cover 3 of 8 criteria in policy 409.

Introduction

- Tonight, the parents and grandparents will address all 8 criteria asking some important questions that nobody else has spoken of, such as:
- What are the effects on students as young as 5, spending 3 hours on a bus daily? (less sleep in the AM, less time for family and homework in the PM)
- How do drop out rates compare between rural and urban schools?
- What about youth crime and drug use in rural areas compared to urban?
- Do more rural students pursue post secondary education?
- What about character building, how do you create good citizens?

Introduction

- 6.4.4 A DEC must consider the following criteria when studying a school's sustainability. This list does not preclude a DEC from considering other factors relevant to their local circumstances.
- **What is a relevant factor for Janeville?**
- **Culture and Language**



Introduction

- Residents in our community are fishermen, farmers and forestry workers.
- Our children are being raised living a country lifestyle.
- Our Ancestors are mostly Irish and Scottish who arrived around 1850.
- Janeville Elementary School is one of the things that holds us close as a tight-knit community.

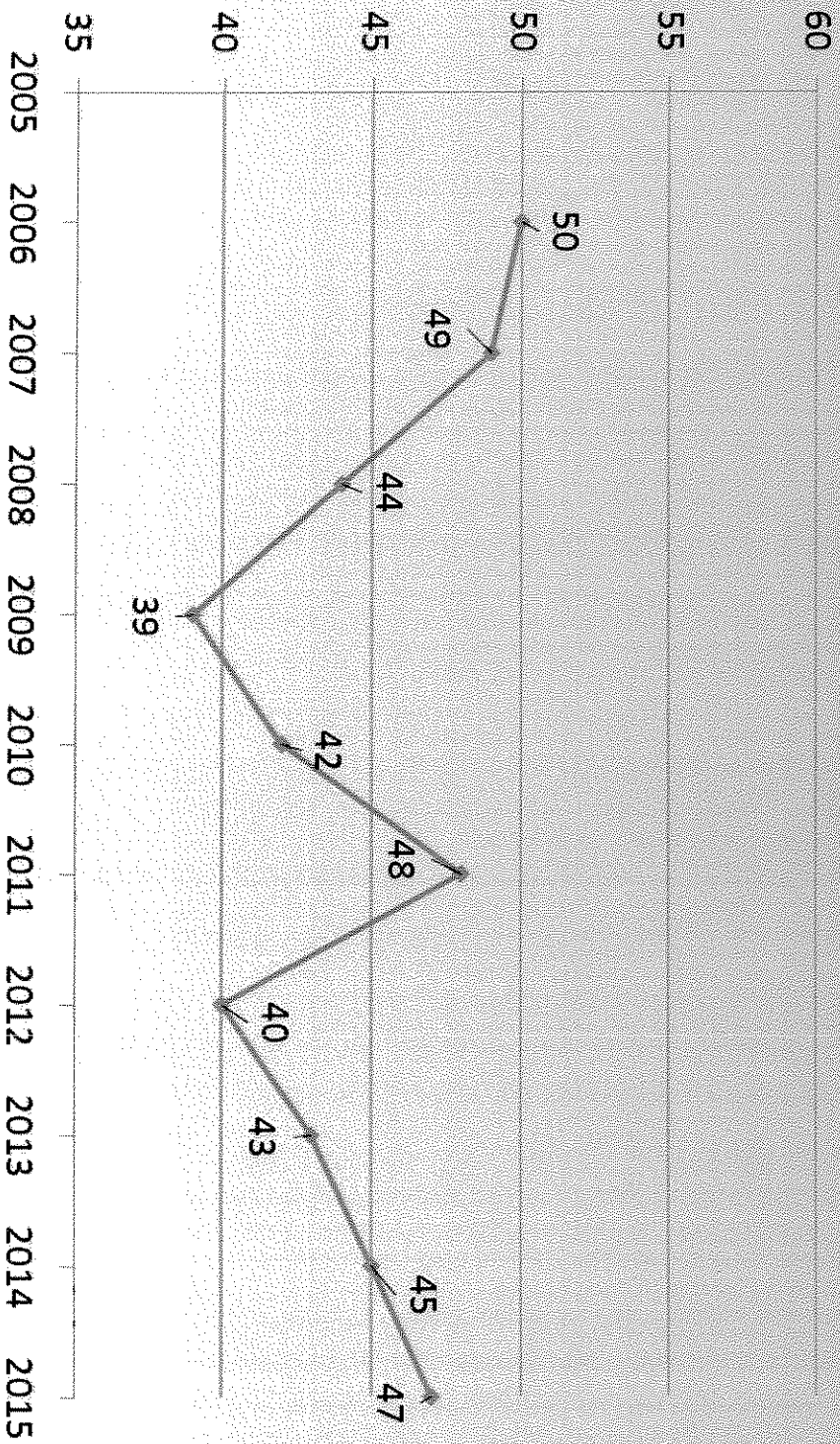
Introduction

- In New Brunswick, French is the minority.
- In the Chaleur Region, English is the minority.
- All we ask is that our culture and Language be protected like that of our Francophone neighbors.

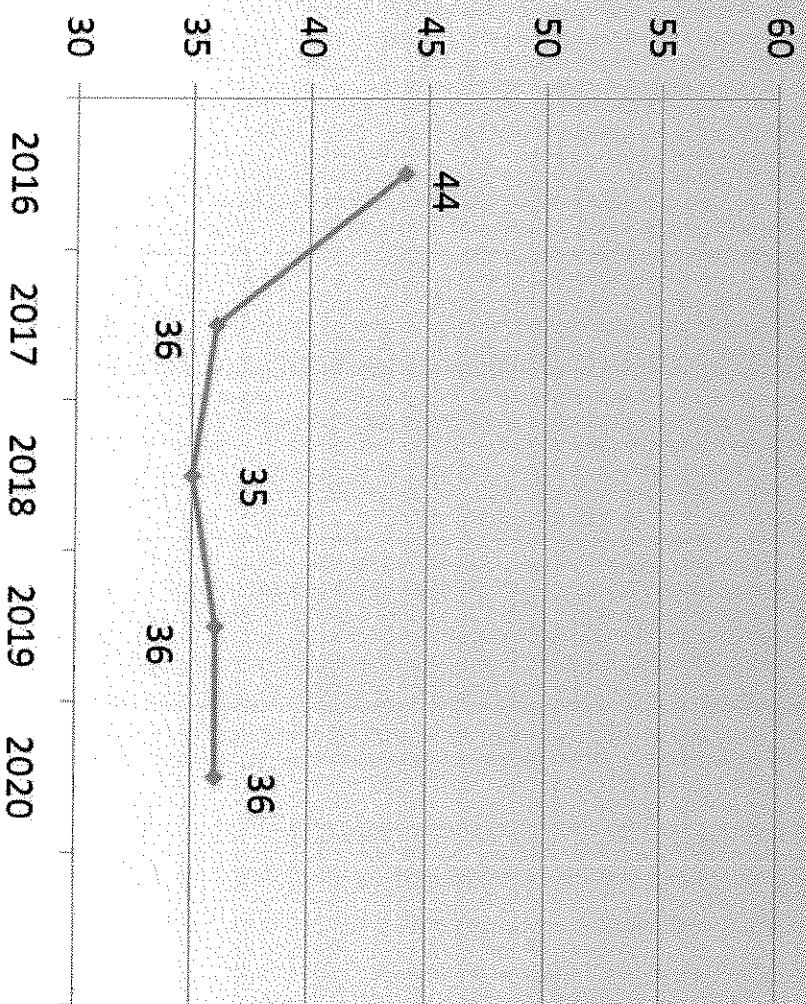
Enrolment

- declining enrolment has been the only indicator for closure of JES.
- there are approximately 11 families in the catchment area with preschool children wishing to attend our school.
- if families living outside our schools catchment area were allowed to enrol their children at JES, numbers would rise.
- We are aware of 6 families wishing to do so.
- There are foster families in the JES area, therefore there is a possibility of more elementary age children arriving.

Janeville Elementary School Enrolment



Projected Enrolment Janeville Elementary School



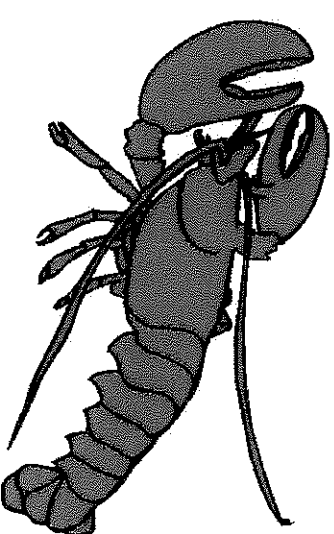
Enrolment

- Historically, enrolment has suffered losses, but always followed by gains.
- 5 weeks ago, the district told us our future was losses only.
- When asked what was the basis for this prediction, the only answer was local birth rate statistics.
- So why doesn't the last 5 years history, match the next 5 years predictions? Are birth rates changing that fast?
- While young people often leave Downshore to "chase" their dreams, some of the same people later come home. They come home with their young families to "live" their dreams right here. There kids to to school right here, downshore. (3 families with 7 students in this room tonight)

Economic Development

- Our committee has become aware of three prospective companies:
 - Oxford Blueberries (St. Isidore area)
 - peat moss plant (Grande Anse area)
 - fish processing plant coming to the area
- Also, Trevali is increasing production and hiring at it's Caribou Mine with 2 other Mines scheduled for production in coming years (Half-Mile Lake and Stratamat)
- As well, lobster fishing licenses at the 3 wharves in the area are held in large part by fishermen over 65 years of age (22 in Salmon Beach and Janeville alone) and as these are required to stay in the area, prospect of young families to take over these licenses could mean more children to attend JES

Lobster fishery



- Stonehaven Wharf.
- Miller Brook Wharf.
- JES serves geographical area with over a dozen wharfs generating substantial tax revenue for the PNB.
- Access to healthcare and education in language of choice is fundamental right of citizens of N.B.
- JES serves Acadian peninsula as the only English K – 5 school.

Stonehaven Wharf

- 28 fishermen plus helpers.
- Over 1 million pounds of lobster harvested during 2015 fishing season.
- Revenue generated locally from raw product: Approximately \$4.5 million dollars.
- Tax dollars generated from fishing in 2015: \$1.88 million (assuming 41.8% of every dollar made goes towards federal, provincial, local and indirect taxes – source Fraser Institute Report, 2014)

Miller Brook Wharf

- 12 fishermen plus helpers.
- 420,000 thousand pounds of lobster harvested during 2015 fishing season.
- Revenue generated locally from raw product: Approximately \$1.89 million dollars.
- Tax dollars generated from fishing in 2015: \$790,000 (assuming 41.8% of every dollar made goes towards federal, provincial, local and indirect taxes – source Fraser Institute Report, 2014)

Summary of tax dollars generated in the community from lobster fishery Vs. Cost of operating JES

- \$ 2.67 million dollars in taxes generated in 2015 from lobster industry in the community (federal, provincial, local, and indirect).
- Operation costs for JES is projected \$473,608 (2015-16).

Existing Businesses

- Jay's Place
- G & N Trucking and Landscaping Ltd.
- Stonehaven Group
- C.J. Fisheries
- Coastal Harvesters
- Ruff Cuts
- Springfield Pet Getaway
- Hachey Holdings

Existing Businesses

- Guys 'N' Gals Hairstyling
- Penny's Travelling Hair Care
- Abby's Lunch Box
- East Coast Shrink Wrap
- Sealy Enterprises
- Chapman's Campground
- Maple Grove Farms
- Brandy Brook Farms

Existing Businesses

- Buttimer Farms
- Crown Plumbing
- Scott Holdings Ltd.
- Hornbrook's Meat Wholesalers Ltd.
- AB Seafoods
- Gillis Cove Cottages
- Ellis Mechanical Services
- Daley Farms

Existing Businesses

- Bayside Breezes Bed & Breakfast
- Patty's Beach Chalets
- Peter Dempsey, carpenter
- Super Tax Services Inc.

Health and Safety

- School is a one level structure and is wheelchair accessible.
- All exterior windows have two secure locks on the interior and cannot be manipulated from the exterior.
- All exterior windows have vertical blinds which can be closed in the event of a lockdown.
- Small number of students per teacher ratio in the event of a lockdown or fire.
- Lockdown procedures and fire drills are practiced regularly with students.

Health and Safety

- All interior doors are equipped with secure locks.
- Three sets of exterior doors which are locked; only two sets of doors are points of entry.
- The New Bandon – Salmon Beach Volunteer Fire Department is located .5 KM away (within walking distance) and is the designated emergency meeting area for the students.
- Students know the local volunteer firefighters as they consist of fathers, neighbours and other community members. In addition, some members of the Fire Department have also attended Janeville Elementary School as a student.

Health and Safety

- The RCMP visit the school and have a close liason and rapport with students.
- School is located in a quiet rural community on a secondary road; therefore, less thru traffic.
- The playground is situated to the rear of the school away from the parking lot and is surrounded by trees.
- The gymnasium at Janeville Elementary School is the largest facility to hold any activities or events in the downshore area.
- With a smaller school, it is easier to contain the spread of communicable diseases.

Health and Safety

- Storage rooms in the school could be used as change rooms for any students who are in a wheelchair, and have been used for this in the past.
- Emergency contacts are primarily in the downshore area. With students moved to the Bathurst area and emergency contacts 20 – 45 minutes away, the practicalities of being able to easily and quickly attend to the children's needs is compromised.
- Janeville Elementary School is the designated meeting area in the event of a disaster, emergency or crisis in the downshore area.
- The major concern of transportation which will be presented and discussed shortly.

Finances

Category	2014-15	2015-16
Salaries	\$499,759	\$420,000
Instructional Expenses	\$6,794	\$6,794
Telephone	\$1,761	\$1,761
Electricity and Water	\$30,015	\$30,015
Minor Repair	\$8,328	\$8,328
Snow and Garbage Removal	\$5,997	\$5,997
Cleaning Supplies	\$713	\$713
Total Operating Costs	\$553,367	\$473,608
Cost per Student	\$12,297	\$10,076

Finances (Cost comparisons)

School	Cost	\$ per student 2014-15	\$ per student 2015-16
Janeville Elementary School	\$553,367	\$12,297	\$10,076
Napan Elementary	\$715,740	\$12,556	
Ian Baillie Primary	\$883,940	\$9,931	
Croft Elementary	\$1,548,505	\$8,899	
Terry Fox Elementary	\$1,809,402	\$8,494	
Rexton Elementary	\$2,073,005	\$8,003	

Finances (summary)

- 3 full times Teachers and 1 Principal, all with 14+ years seniority
- 3 Educational Assistants
- 1 Custodian and 1 part time Secretary
- The teachers and principal will be relocated, eliminating some contract positions at other schools and the EA positions will go to Terry Fox Elementary with the students.
- Is it worth closing a rural school to save 1.5 positions?

Quality of Education Programs and Services

- Provincial testing: Regularly score at or above district and province.
- Student / Parent surveys always score high.
- Teaching styles need to be different in multi-level classrooms. Differential instruction is the norm and it gives the individual student the help they need.
- Accessibility: A previous student in a wheelchair didn't miss out on anything because Janeville has no stairs. Even a temporary EA in a wheelchair has worked at the school.

Quality of Education Programs and Services

- Technology
 - School has 13 iPads
 - Every classroom has a Smartboard
 - Morning news is streaming video done by students.
 - Marvin film festival 2009 award.

Quality of Education Programs and Services

- Student Services Team is made up of all staff. All staff are familiar with strategies and can deal with conflict consistently from one student to the next. All staff take ownership of every student.
- School Improvement Planning: all teachers and PSSC are involved in all aspects.
- Access to outside specialists: occupational therapist, psychologist, math leads, literacy leads, ESS team, Autism specialist, behavior interventionist, social workers. What is Janeville missing that the bigger schools have?

Quality of Education Programs and Services

- Activity list:
 - Science Buddies Running Club Book Club
 - Puzzle Club Art Club Popcorn Sales
 - Christmas Play Drama Club Sports (Lunchtime)
 - Loom Bracelets Veteran's Visits Talent Show
 - Writing Club Crib Club Recycling Project
 - Science Fair Family BBQ Fall Fair
- At Janeville School, it's believed that quality education can and does occur beyond the traditional classroom doors.

Quality of Education Programs and Services

- Events List:
- Art Smart Grant Science East Hawk visit
- Remembrance Day Heritage Museum SPCA
- TNB Cloggers Maple Sugary
- Fire Department Terry Fox Walk Jump For Heart
- Geocaching Author Visits Radio Station
- Canoe Safety Children's wish Foundation
- RCMP DARE & Stranger Danger

District Presentation (School Challenges)

- Principals in small schools are often required to teach specialty subjects and have a large percentage of time dedicated to teaching.
- What better way for a Principal to know what's going on in the school than spend some time in the classrooms. Effective principals don't stay in the office all day.
- Lack of ability to consistently provide instruction by subject experts in music and physical education.
- This may only be true of music class, we're not aware of physical education being taught in the elementary schools by teachers with physical education degrees in the Bathurst area.

District Presentation (School Challenges)

- Less opportunities for participation in extra curricular activities.
- Opportunities for co curricular activities may be limited in rural areas.
- When a staff member from Terry Fox Elementary was asked about extra curricular activities over the last few years, 6 were named.
- Extra-Curricular activities at Janeville Elementary:
 - 18 clubs and 18 events in recent years.
 - Activity Participation rates are very high. If Janeville closes, some students will not be as active in whatever activities are offered because of extra travel (25 Km each way).
- Co curricular activities are often organized with guest speakers / performers coming in. Field trips are always organized with a strong tie to curriculum. If a bus is booked, the whole school goes, not just one grade.

District Presentation (opportunities)

- As part of a larger staff at a new school, teachers would have the opportunity for more personal growth and benefit from a vast network of best practices.
- Exposure to a more diverse teaming experience.
- Teachers would be able to offer specialized instruction in their areas of expertise such as guidance, resource, music, physical education.
- These points are all benefits to teachers, we're talking about closing a school, shouldn't the students be the #1 priority?
- Janeville has piloted several initiatives (intensive French, school review and currently a K-1 Math Pilot, 1 of 3 schools in the district to do so). These teachers don't need to be brought up to speed on best practices when they're the "pilot school".

District Presentation (opportunities)

- No former teacher has had their “personal growth” held back by working at Janeville Elementary. Former staff include:
 - District Superintendent Elizabeth Stymiest
 - Deputy Minister of Education John McLaughlin
 - President of the Canadian Teacher’s Federation Heather Smith
- If anything, Janeville Elementary has a reputation of grooming future leaders.

District Presentation (opportunities)

- Potential for more student collaboration as part of a larger school.
- Studies show that student collaboration increases in smaller schools.
- Fewer combined classes.
- Terry Fox had combined classes last year, and the year before that; besides, are combined classes really a bad thing?
- More access to after school activities and sports teams.
- We're not aware of organized elementary sports teams in Bathurst.
- Combined per student funding for two schools, consolidated to one school, giving Administration more flexibility to meet the needs of larger groups. (Ex: Instead of equipping 2 classrooms, only need to equip 1)
- The classes in Janeville are well equipped, the school doesn't need anything.

Studies

- Are split grades really so bad? (A 2014 article in Today's Parent)
- “Your best combined-class teachers are going to be your best straight-grade teachers—creative, innovative, collaborative,” says Jeff Anderson, the principal of École Varennes, a French immersion K–8 school in Winnipeg.
- A 2009 report by People for Education, an Ontario-based independent organization that works to support public education, found that 78 percent of Ontario elementary schools reported having split-grade classes.

Studies

- “Smaller, Safer, Saner Successful Schools” by Center for School Change 2007.
- Smaller schools, on average, can provide
 - a safer place for students
 - a more positive, challenging environment
 - higher achievement
 - higher graduation rates
 - fewer discipline problems
- much greater satisfaction for families, students, and teachers.

Studies

- From Ontario's Small Schools - People For Education
- Research shows that smaller schools:
 - improve student achievement,
 - increase attendance and graduation rates,
 - elevate teacher satisfaction,
 - improve school safety, and
 - increase parent and community involvement

Studies

- From The Hobbit Effect: Why Small Works in Public Schools
- The achievement gains due to small class size are greatest among disadvantaged and minority students.
- The academic effects of small classes in lower grades persist in middle and high school years, even if students are subsequently moved to larger classes.

Studies

- From Ontario's Small Schools - People For Education
- Researchers at New York University's Institute for Education and Social Policy found that, although smaller schools spent more per student than larger ones, (\$7628 compared to \$6218), the cost per graduate was actually slightly lower, as the drop-out rates at small schools were considerably lower than larger schools.
- If the only measure of the education system was high school diplomas, money would be best used if spent on small schools.

Impact on Other Schools

- Should Janeville Elementary close
 - Superior Middle School and Bathurst High would no longer see the benefits mentioned in several studies crediting small schools for developing students who:
 - Are more academically successful than those in larger schools.
 - Have higher graduation rates.
 - Are more likely to take advanced level courses.
 - Are more likely to participate in extra-curricular activities.
 - Are less likely to behave aggressively.

Impact on Other Schools

- Should Janeville Elementary close
 - Terry Fox Elementary would need to hire 2 more teachers (grade 1 and grade 5 intensive French) as the Janeville students would put classroom numbers over maximums.
 - If any 1 of 42 grade 2 students would need to repeat their grade or 1 more student would move into the area, there would be a need to hire a 3rd teacher.
 - It likely that this scenario would never become reality. I'd be very surprised to see 2 or 3 more teachers hired. We'd likely see combined classes at Terry Fox Elementary again.....but wasn't reducing combined classes a reason to close Janeville.

Transportation

- Present Environment:
 - morning bus run begins at 7:15
 - longest ride is approximately 28 minutes.
- afternoon, bus runs:
 - early run is 30 minutes
 - late run is 1 hour and 12 min.
- The 1 hour and 12 min bus run is new, introduced several years ago when bus routes changed.

Transportation

- Impact on rural households:
 - evenings have become very structured, tight on time with essential routines homework, supper, bathing, etc.
 - This negatively impacts any time for free play, evening activities etc. Parents are left with a choice – continue to maintain same schedule and reduce children's sleep time or eliminate the extras – free play and activities.

Transportation

- Proposed Environment – Janeville Closure :
 - The distance from Paquetville to Terry Fox is **59 KM** - a total of **118 KM** daily.
 - The equivalent of driving from Bathurst beyond Campbellton daily. Times this by 5 days and you are looking at **590 KM** weekly, the equivalent of driving from Bathurst to just past Quebec city.
- More time spent on a bus for young students.
 - For the least fortunate students **1.5 hours** one way.
 - That's **15 hours** per week.
 - That's more than most adults spend driving to work.

Transportation

- Imagine sending your Elementary School Child to school for a period of **10 hours** per day
- **50 hours** your young child would be away from home per week.
- This is the reality of what we would be imposing on our children should Janeville Elementary School close. Some children would be required to spend more than the average work week in transit & school.
- That's an awful long time to be sitting quietly.

Transportation

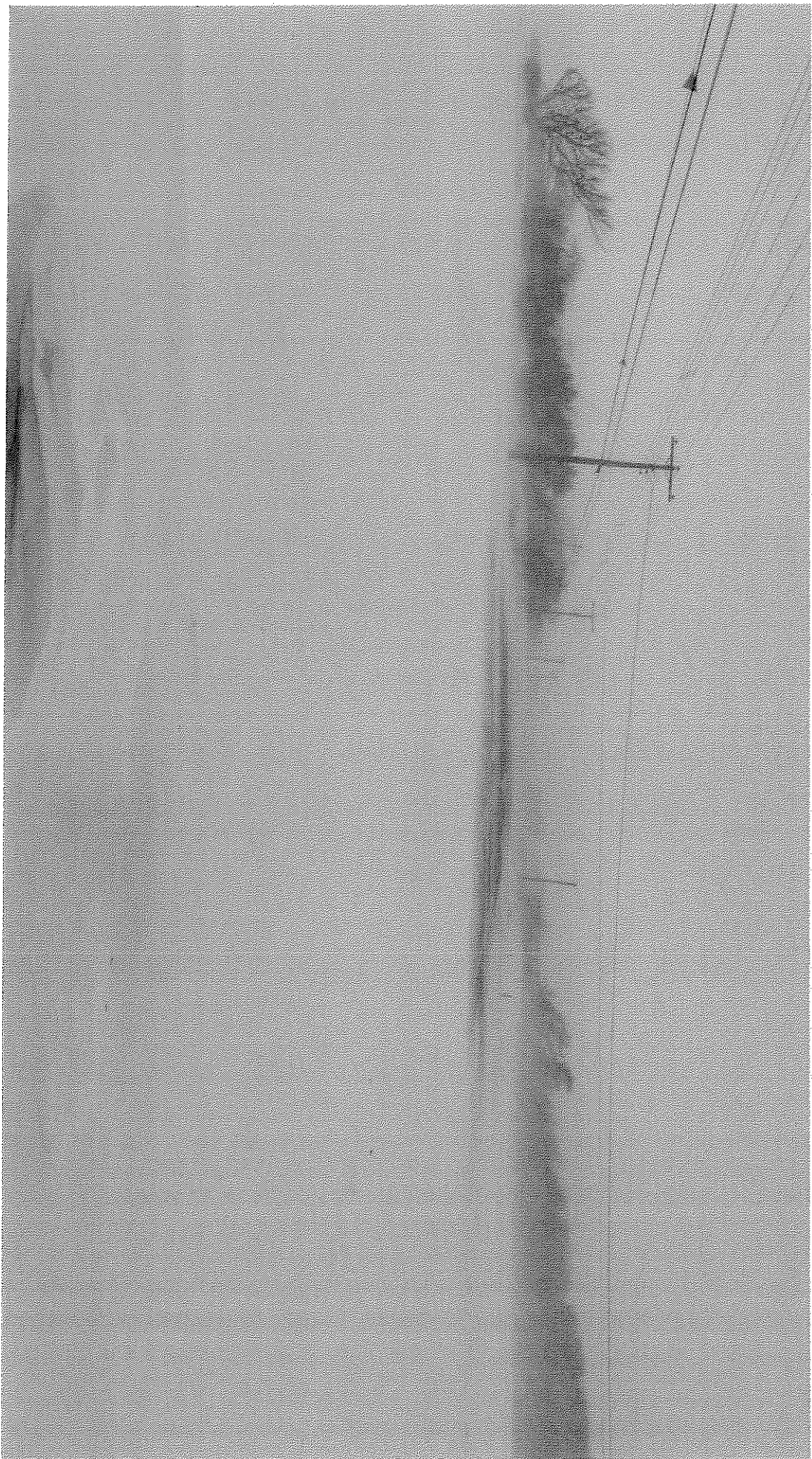
- Extended busing time - negative impact on childrens' well-being.
- Each afternoon, the youngest children would be required to wait for the late bus, resulting in an additional **1 hour & 15 minutes**.
- This is **6.25 hours** of additional sedentary activity.
- Our children thrive on numerous outdoor activities to which they would be robbed of these opportunities.
- A significant loss for our youth and culture.
- One of the priorities for our youth and Canadians as whole is physical activity and healthy lifestyles.
- This directly contradicts the mandate of well-being for children.

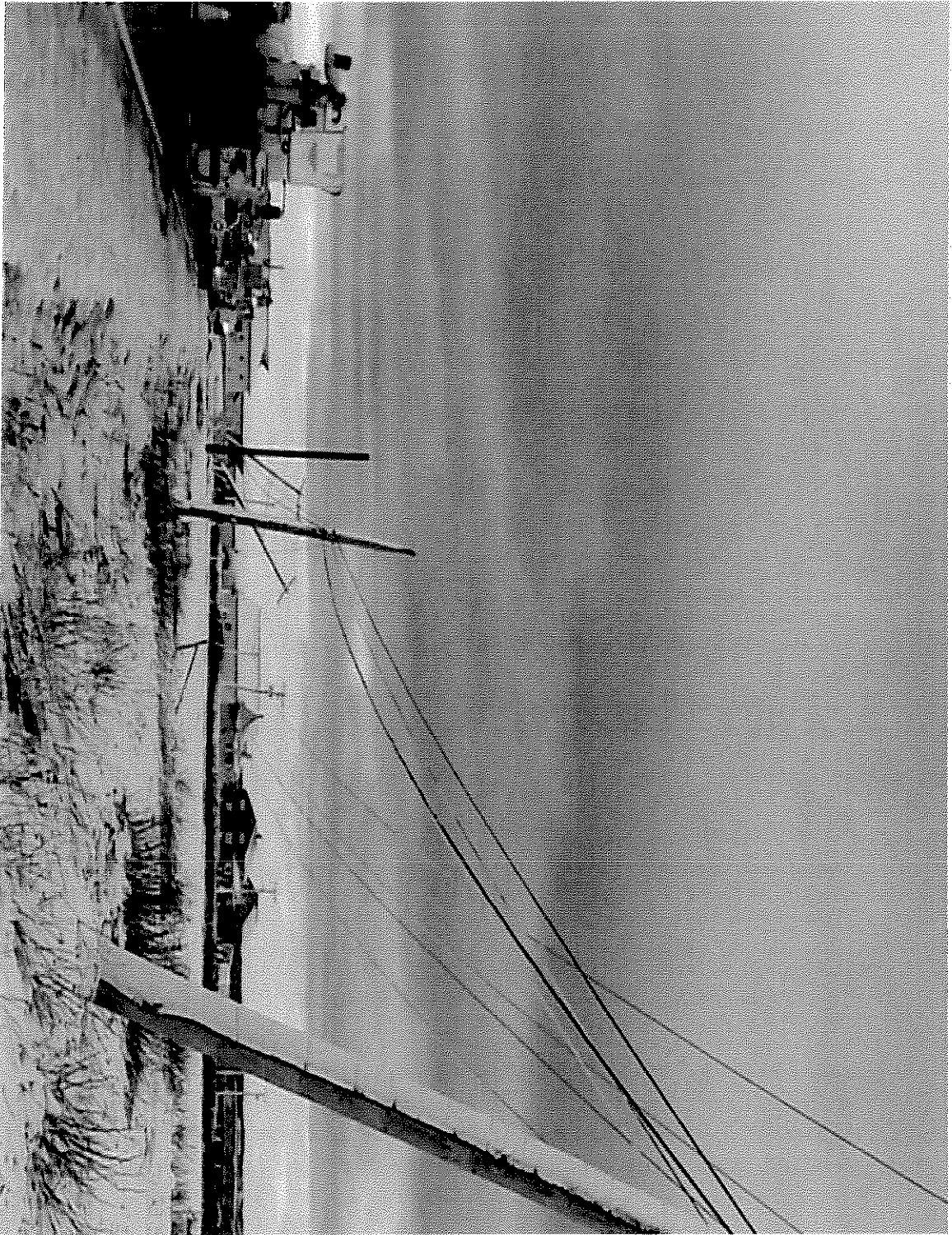
Transportation

- Road Conditions & Inclement Weather:
- Last school year alone, schools were closed a total of 11 days. In our area, the buses were not permitted to run 3 more days.
- Decreased snow plow services due to budget constraints have had an impact:
 - Plow service begins at 5:30 AM.
 - Plows make several passes on highway 11 for every 1 pass on Janeville Rd. and Cape Rd.
 - It takes approximately 3 hours to cover the area, buses are on the roads at 6:45 to pick up students at 7:15.
 - Some roads are not plowed until after 8:00, after the buses have gone by.
 - Approx. 4 to 6 times last winter, Route 11, from End of Cape Road downward was closed due to inability to keep the roads open.

Transportation

- We would like to share with you a few pictures of past storms:
 - they say a picture is worth a thousand words but.....
 - I have lived Downshore for 15 years, above the Salmon Beach turn.
 - I am always shocked by the weather conditions when I go beyond the turn.
- **To see a picture is one thing, to actually experience it, is another.**









Impact on Local Community

**It takes a
community to
Raise a child!**

Central United Church
6724 Rte 11
Clifton, NB E2A 5M4

September 28, 2015

Central United Church wishes to state its unequivocal support of keeping Janeville Elementary School open and operating. Janeville Elementary not only allows our community to support our youth, be engaged with our youth, but also to add a sense of pride and being a part of community to our youth.

Our small rural area, affectionately known as "downshore", is comprised of a handful of small communities with limited available infrastructure. Downshore is known for its unique rural life style where children have historically been collectively identified as being hard workers and high achievers. A large part of this is due to the sentiment that it does in fact take a village to raise a child. Downshore is that village and our children go to Janeville School.

Janeville School also offers the largest facility available in our rural community for public gatherings, concerts, meetings, and other social events. Central United Church has in fact used the gym facility to put on community concerts which draw too large a crowd to be accommodated at our existing hall. This has allowed us to bring in popular musical groups we would have not been able to host without the school. Church youth groups, such as Beavers, have also used the gym for activities and many of our congregation have interacted via community programs and activities held at the school. It is local, easily accessible for seniors and people with disabilities and can accommodate large groups. It is a wonderful gathering place for many community events.

Central United has in fact an inter-generational outreach project under development with the aim of increasing the interaction of our youth with seniors. The main objective of this program is to have weekly activities with our youth of Janeville School interacting with seniors and other interested community members on Wednesday afternoons (this is possible as the students are free of classes each Wednesday afternoon due to early morning start times each day as per busing schedules). We strongly feel that a program of this type will act inclusively to enrich both the lives of our seniors and our youth. This is essential to the sustainability of our downshore community.

Having Janeville Elementary active in our community embodies the spirit of an inclusive community. The school throughout its history has been open and involved with bringing seniors, parents and the community at large into the school environment and offers the chance for all to interact with our youth. This environment allows all of the community to show pride and support to these children and makes youth in turn feel valued and important as part of the downshore community. This is so essential in the development of positive, self-confident youths with a sense of community involvement that is so often lacking today.

We strongly feel that Janeville School is the heart of "downshore". We stand with pride with all concerned parties in support of keeping Janeville Elementary as part of our collective community.

There is not much in the way of existing infrastructure for our community; we have two larger church denominations and one small one, a volunteer fire station, and our school. Each of these play an integral part in keeping our community vibrant and cohesive. Each group depends in some way on another, and as is the local tradition, each group helps each other out when needed. This is just our downshore way.

Our congregation is comprised of members from the same rural communities as Janeville School, Salmon Beach, Janeville, Canobie, Clifton, Stonehaven, New Bandon and Pokeshaw. These small rural communities are known collectively, and affectionately as "downshore". Our downshore is a tight knit community with a rural sense of community that is disappearing quickly .

Our "downshore" way of life is becoming unique – small rural communities where our children, seniors, and all in between ages are treated inclusively, and interact at all social functions.

NEW HORIZON'S FOR SENIORS PROGRAM

Central United Church Council has submitted an application to the New Horizon's for Senior's Program to receive a grant. This grant is for organizations who want to help seniors make a difference in their lives, and in the lives of others in their communities.

If we receive this grant, one of the major projects that we have submitted is a Wednesday Afternoon Intergenerational Program, that would see the seniors in our community interacting with the elementary school aged children. We hope to get the seniors and children together once per week to do crafts, storytelling, movie and popcorn afternoons, baking/cooking projects, board and card game afternoons (etc) at Central United Church Hall.

The viability of this part of our project depends entirely on Janeville Elementary School remaining open, so the youth of our community can continue to have Wednesday afternoons and would be available to participate and interact in the life and health of the seniors of our community.

This project will help to promote volunteerism among seniors and other generations, engage seniors and youth in the community through mentoring, expand awareness of elders and their gifts to the young people, and support social participation for the youth and seniors.

Bay Chaleur Manor Inc.
Sept. 11, 2015

The Bay Chaleur Manor Inc. Board of Directors and tenants strongly support all efforts to keep Janeville Elementary school open for the future. The closure of the school would be a great loss to our youth and seniors of the community.

The Manor is located adjacent to the Janeville School and Ninety percent of the tenants are downshore residents that have lived their life in this community. The youth have had many visits to the residence to learn about what their community was like when the seniors were their age. What the students learn from that experience is invaluable knowledge that can not be taught in a school. If the youth are moved to Bathurst it is very likely that part of their background would be lost. Knowing where you come from is a very big part of knowing where you are going.

The tenants support all school activities such as Christmas concerts, Science fairs etc. Support for the youth of our community builds confidence. The interaction of the two age groups is something that is very much lacking in our times and we feel that the close proximity of the two groups in our community is a huge advantage to the education of our youth.

The Janeville School is the only facility, in our community, large enough to hold special events which the tenants always attend. We believe that if the Janeville School were to be closed it would not only have a detrimental effect on the education of our children and grandchildren but on people of all ages in our downshore community.

Home and School

- Contribute to Safe Grad at Bathurst High School
- Donate to Children's Wish Foundation
- Paid for sound system at Christmas concerts
- Donate to The Spirit of Christmas
- Contribute to annual Bucket of Sunshine
- Purchase Mathletics program

Home and School

- Purchase Raz Kids program
- Purchase Hackmatack Books
- Purchase Chair Slippers
- Purchase treats for Christmas concerts
- Purchase gift cards for student incentive for Fall and Spring Fundraisers
- Paid for talkmail system

Home and School

- Purchased iPad covers and apps
- Donated to iPad initiative
- Purchased Character Counts items
- Guest presentation at school with birds - Island Falconry Services
- Guest author - Writer's in school application
- Purchase gifts for Staff Appreciation Week

Home and School

- Donated annually to the Grade 5 year end trip
- Purchased outdoor toys including trucks, skipping ropes, etc.
- Bridges – Device purchased to help student communicate
- Jacquet River minor basketball track and field for Janeville students participating
- Purchased snowshoes
- Contributed to “Help Lesotho”

Home and School

- Donated to Parkwood Heights Elementary School Easter Basket Auction
- Purchased tailings for soccer field
- Purchased and planted a memorial tree
- Purchased all playground equipment and pea gravel which was completely installed by a group of volunteers including parents, grandparents and other community members

Summary and Conclusions

- On September 29th, you came to our school and presented your case for the proposed closure of our school.
- At the conclusion of that presentation you asked that in our Community Response we offer facts and not a heartstrings plea for keeping our school a reality so we went to work
- So let's begin with some basic facts

Summary and Conclusions

- Over the last 10 years Janeville Elementary School has maintained its level of enrolment and based on economic prospects enrolments remain stable and have the potential to increase in coming years.
- Janeville Elementary School is a relatively new school, opened in 1982, with no foreseeable need for upgrades. The building has been well maintained. The use of space is impressive and efficient. We have strong emergency support teams that already have a long standing rapport with the children.

Summary and Conclusions

- Teachers' salaries at Janeville Elementary do not become a savings for the District. Our teachers are senior educators and their salaries will follow them to whatever new school is lucky enough to have them. Our Education Assistants will also follow our students to other schools – so is also not a savings to the district. The school has no foreseeable major capital projects pending. Closing Janeville School only gives the province a potential savings of \$77,000. That's the cost of a custodian, a part time office administrator (\$44,000) and all other current expenses (\$53,000). Minimum heating and snow removal for insurance purposes will still be needed costing (\$20,000). Are we really looking at closing this school for the sake of \$77,000?

Summary and Conclusions

- Janeville Elementary School has consistently provided our students with a strong academic foundation on which they have built very successful careers – Valedictorians, Honors with Distinction, Honors graduates and graduates are numerous amongst the students from Janeville Elementary. By piloting such initiatives as the current Kindergarten/Grade 1 Math project Janeville Elementary can sustain quality educational programs as we consistently seek opportunities for professional learning. Janeville is a leader in creative, innovative, and collaborative teaching styles which offer huge benefits to our students as well as the entire education system. Janeville Elementary is actually a school that should be studied for its successful performance instead of being considered for closure.

Summary and Conclusions

“As a Janeville Elementary Alumna I can say that this incredible school has had a tremendous impact on me both personally and professionally. Attending a tight-knit community-based school provided me the support, encouragement and confidence I needed to achieve my academic and professional goals through to middle school, high school, university and beyond” – L. Daley

Summary and Conclusions

- Travel in Northern New Brunswick, along the shore, is dangerously treacherous and unpredictable. Our winters can be brutal but do not discount the force of rain and wind through summer, spring and fall months. Trees topple, power lines go down, logs and debris are thrown up on the roads, rivers surge. Experiences that have been all too common in recent years.

Summary and Conclusions

- Decreased snow plow services due to budget constraints have negatively impacted the driving conditions in our area. Approx. 4 to 6 times during the past winter, Route 11, from End of Cape Road downward was closed due to inability to keep the roads open with drifting snow and high winds.
- Our buses are on the road at 6:45am to ensure they are on time for first picks up of 7:15 when roads have not yet been cleared for safe travel.

Summary and Conclusions

- One mistake in weather prediction could prove disastrous!
- It sounds clichéd to say it but ... “If you have not witnessed the realities of ‘downshore’ weather extremes they are impossible to comprehend”. Not only their intensity but their unpredictability can be disastrous. The safety of our children rests on accurate and preventative forecasting and we all know how that can go wrong. Most families in this community have a close link with every child that attends school in this building or travels the busses that serve it. The added 50kms journey to Bathurst per day adds unnecessary burden and worry to everyone in the community.

Summary and Conclusions

- Parental involvement with our youth - Quite simply, parental involvement would likely become challenging ... the long distance to travel to the city school by parents, grandparents and other family members would make attendance difficult. And who hasn't sat in the audience at one of our Christmas Plays and had their child searching the crowd for their Mom, Dad, Grammy, Grampy, brothers and sisters? And when the connection is made the smile that crosses their faces is priceless - a child's sense of self-worth and value growing in leaps and bounds in these important moments.

Summary and Conclusions

- Health, Wellness and Physical Activity have been huge issues for our schools in recent years. School menus were altered to include healthier choices for students, physical activity became our tool in fighting childhood obesity, less computer and television time at home, encouraging reading, family time and outdoor play. One of the recommendations offered by ParticipACTION report card of Canada to schools and municipalities is to “examine existing policies and by laws and reconsider those that pose a barrier to active outdoor play.” To bus our children into the city you are asking them to spend 10+ hours a week in sedentary activity, in perfect weather conditions.

Summary and Conclusions

- “The 10 or more hours a week that students would
- normally spend engaging in experimental learning and family
- time, would be spent commuting to and from school on a
- bus with students of ALL ages. A commute of this length is not only an inconvenience and a waste of time, but will slowly
- strip away the layers of heritage and tradition that this community has worked so hard to build”. - K Knowles

Summary and Conclusions

- Loss of Connection with “HOME”
- Farming, Fishing, Hunting, Planting, Harvesting, Wood Cutting – before and after school our children take part in trap setting, moose and deer hunting, gardening, haymaking, milking cows, driving tractors, baking, knitting, quilting, sewing, horse riding, harvesting fall crops, potato picking, pickling, camping, 4 wheeling, trapping and snow removal. These are activities almost any downshore child has knowledge of and exposure to from very young ages.

Summary and Conclusions

When they arrive home from a day of writing, reading and arithmetic it is to spend the remaining hours of the day taking part in their family 'home' life learning life skills that contribute to the well-being of their families. The stories they write in school reflect this learning and the time spent with grandparents or aunts and uncles is invaluable.

Summary and Conclusions

“To a large extent, I attribute my integrity, honesty, and loyalty to the community-based education that I received at Janeville Elementary School – a kind of education that is grounded in tradition – a kind of education that is impossible to achieve when children are forced to attend school outside of where they live – and a kind of education that cannot be manufactured in a city-based overcrowded classroom of six year old children. I cherished the time I spent going to school in my community, and arrived at middle school with a strong sense of who I was, where I came from, and what I stood for. My experience at Janeville Elementary School taught me that it truly does take a community to raise a child.” – K. Knowles

Summary and Conclusions

- Emergency contacts are primarily in the 'downshore' area With students moved to the Bathurst area and emergency contacts living 20 – 60 minutes away, the practicalities of being able to easily and quickly attend to the child's needs is compromised.
- Multiage classes encourages acceptance and involvement of ALL children, and opens doors for leadership opportunities and allows students the curriculums that best meet their individual needs.

Summary and Conclusions

- Family Recreational Activities
- The school gymnasium is the only venue available that is large enough to accommodate the whole community. In the event of a disaster the school is our community's safe haven. There are neither sidewalks nor safe walking places anywhere downshore. The school provides a place to walk when the weather turns cold, when the strong cold winds make outdoor activities unpleasant and unsafe and at times impossible. Volleyball, Badminton, Dodgeball, Craft Fairs, Winter Carnival Events, Concerts, Plays, Yoga and Wellness clinics – all contribute to a healthy community.

Summary and Conclusions

- “While I chose to move away from northern New Brunswick to pursue my academic and professional goals, I do dream of one day moving back to my home town. As a family physician, I understand the importance of community-based initiatives and would love to one day give back to the community that offered me so much as a child and adolescent. That being said, if Janeville Elementary School closes and my children are denied the opportunity to attend a school in their own community, moving back to my hometown will not be an option. I know many young professionals who are products of Janeville Elementary’s excellence who share this sentiment.” - L. Daley

Summary and Conclusions

Once more I shall borrow a quote:

“The ongoing battle to close smaller schools is unnecessary and irrational. Small schools are intrinsically disposed to offer educational and social advantages for children. To expend energy on closing these schools diverts energy and focus from strengthening them ... and worse, wrenches community centered schools from their communities and children from the schools that will have the most likelihood of meeting their needs.”

(Jimmerson, 2006, p.17)

Summary and Conclusions

When The DEC presented in September they challenged us to prove to them the viability of keeping an underpopulated school open. We accepted the challenge and feel we have done so in spades. We have done so with common sense and an extraordinary amount of input from the people that will be permanently affected should the closure go forward. We did not go the political “Why us and not them route”. We have done so determinedly and respectfully and feel we have proven beyond a shadow of a doubt the need for Janeville Elementary School in this community. And so If WE are truly invested in the “best interests of each child” we would like to offer you this...

Summary and Conclusions


****WHEN you choose to keep our school open, we offer you our commitment to work collaboratively with Anglophone North School District to explore various opportunities in regards to recruitment, better use of our school, new initiatives and ongoing community wellness programs. ****

To close this school would be to unravel the social fabric of this community.

Summary and Conclusions

WE MAY BE SMALL BUT WE ARE VERY NECESSARY!

**Thank you for your time and consideration, we look forward to your response on November 16th, 2015
6:30pm**



Save our Janesville Elementary School

November 3rd 2015

Presentation prepared & delivered by

Bilva Riordan

with the help of these children
ava, , and

Ten years from now I will be more disappointed by the things that I didn't do than by the ones I did do...

Biba Riordan

minister Denis Landry
member of the advisory committee for the
minister of Education "Serge Bouchelle"

Ladies & Gentlemen

Last but not least my three special
guests...

Ladies & Gentlemen the children... my guests
Ava, , and

I do not want to forget to ask you to
say a prayer for Muriel Daley... she was at
my home for signatures related to the petition.

am I here as a parent? No... I do not have
children attending Jeneville school but
I am a Mom of four children who attended
Bathurst High School... and they would have
not participated in sport or school activities
if they have travelled on a bus... I did my
school work after school so they could have
that chance of participating in sports or activities.

am I here as a professional... a teacher? No!
I am a retired teacher now...

am I here as a Professional Home Economist? yes!!!
I pay my dues every year even since I am retired.

my mission is... To improve the quality of life
of individuals and families... I want to do everything
in my power to help the families...

am I here as an advocate for children? Definitely yes!
I love children!!!

and also ~~am~~ ^{am} I here as a community minded citizen.
I have been on committees for some of the Grande Course
arena and the Grande course church...

I want to do my part and help anyway I can...

Tonight ...

a child has no voice ...

yet tonight the big talk is about a school ...

a school is about what ... children!

Tonight ...

a child has no voice ...

yet we depend on his/hers school for the life
of the communities involving Janeville school!

Tonight ...

a child has no voice ...

I want to be the voice of those downshore children
who depend on Janeville school in order to
reach their full potential!

Tonight ...

It's not about money ... it's about children ...

preserving their school ... children are not numbers!

they are our resources of tomorrow ...

Their name is not tomorrow ... Their name is Today!

Preserving their communities which are part of
raising a child ...

Tonight ...

It takes a whole community to raise a child ...

Tonight...

We are faced with a challenge...

Our communities will stand as one...

We will rise above the threats, the noise,
the arguments, and the pressures that surround us...

We have come a long way... hard winters...
lost lives on the shore...

as fishermen, farmers... we have fed cities,
urban cities...

We are not going to let school in the city
of Bathurst to feed themselves, with our children
to fill their numbers in their classrooms.

I conclude with a quote from Stacia Jansher:

"We worry about what a child will
be tomorrow, yet we forget that he is someone
today."

Thank you!

Questions?

Community Speaker Penny Morrison

Good Evening,

Thank you for allowing me time to speak at this very important meeting. My name is Penny Morrison, I am from this community and have been an entrepreneur here for 33 years.

I asked to speak tonight because our community is in danger of losing its identity and more importantly the identity of future generations. Our community is a quiet one, we don't ask for much but what we do have is a strong sense of community.

Firstly, I would like to address the issue of finances of our school. As a community we have no municipal government, we don't get much of the provincial budget.

The government of New Brunswick has no other buildings in our community that offer any services besides the Fire Department, which is volunteer. We financially are not draining in anyway. Our school could provide other services for government agencies. The government could house a health center for our aging population and our greater population. This could save the government millions in unnecessary Emergency Room visits and unnecessary hospital stays. Allowing for a wellness component of this center would also help the government and community save money and lives for both young and old. The students do not have school on Wednesday afternoons and so the building would allow for this type of

service. Furthermore, other schools in the province have an early child care center. We do not have this type of service in our community or in the greater Bathurst community. This again would provide savings for the government and provide much needed services to our community and the outside communities. Thirdly, an afterschool program in which parents fund childcare would increase revenues to the school as well and provide needed afterschool daycare. Rental fees for the school would also offset the cost of running the school. Many schools rent to outside community events also gaining revenues for the district.

These community services that we could provide will also create a more attractive place for families to come

and live. Our economic growth as a community relies on new generations taking over from us.

Lastly, many schools in our province are closing and combining to become Kindergarten to grade 8 schools. If our kids go to Superior they may loose out on Late Immersion Our ~~but our~~ school could easily do this, the current staff has Immersion training.

Not only would this keep kids in their community but would allow for big savings on busing. Only our high school students would need to be bussed to Bathurst and would only need 1 run in the morning and 1 in the afternoon. Other communities are doing this so why can't we?

Janeville Elementary school has a great record in academics. The students who leave Janeville Elementary have a higher performance levels than town schools, so why would we want our students going to schools who don't produce the same level. *I spoke to different teachers at Bathurst High & Superior that this is a fact*
This school has provided a second home for our children and our grandchildren. A place where not only do parents participate in school based activities, but grandparents, great grandparents, aunts, uncles, cousins, and neighbors come together to celebrate our youth and their education. We are a community who has a unique cultural heritage that will be lost when our children are moved to a city school. At the beginning when

6

the Minister of Education announced these review of our schools, he stated that he would not close schools that were "an island on to themselves ... We are that Island on to ourselves! We are the only Anglophone school serving the Acadian Peninsula .

Being a Canadian means that your culture is respected and is important. We are a community that is in a generational turnover and with the loss of our school it means the loss of our culture as a community. We don't want special treatment, we just want to be treated fairly, to have what others have- the freedom to live and grow in our culture, to preserve our way of life and to have children feel proud of who they are and where they

live by continuing to go to their community school.

We have to find an alternative solution to closing our school. I have provided some for you to think about tonight. I have lived and worked in this community all my life. We are not a loud and proud culture, but we are hardworking and determined to pass down to our children our way of life.

This decision to close our school is not just about numbers ...we are humans and we need to think about the lives we affect. All our community really needs is a school, we have always provided the rest for ourselves. Please allow us to continue our way of life.

Thank you again for your time

Community Speaker MLA Denis Landyry