

Sustainability Study: North and South Esk Regional High & North and South Esk Elementary



Public Meeting # 1

Agenda

- Introductions
- Review of Provincial Policy 409 Multi Year Infrastructure Planning
- Presentation of Facts
- Question and Answer
- What's Next

Provincial Policy 409

- Section 6.1.2 – triggered sustainability study
- Student enrolment trigger, percentage occupation trigger
- Section 6.4 – Determining a school's sustainability
- Section 6.5 – Public consultation on a school's sustainability
- Section 6.6 – Ministerial approval of a school closure

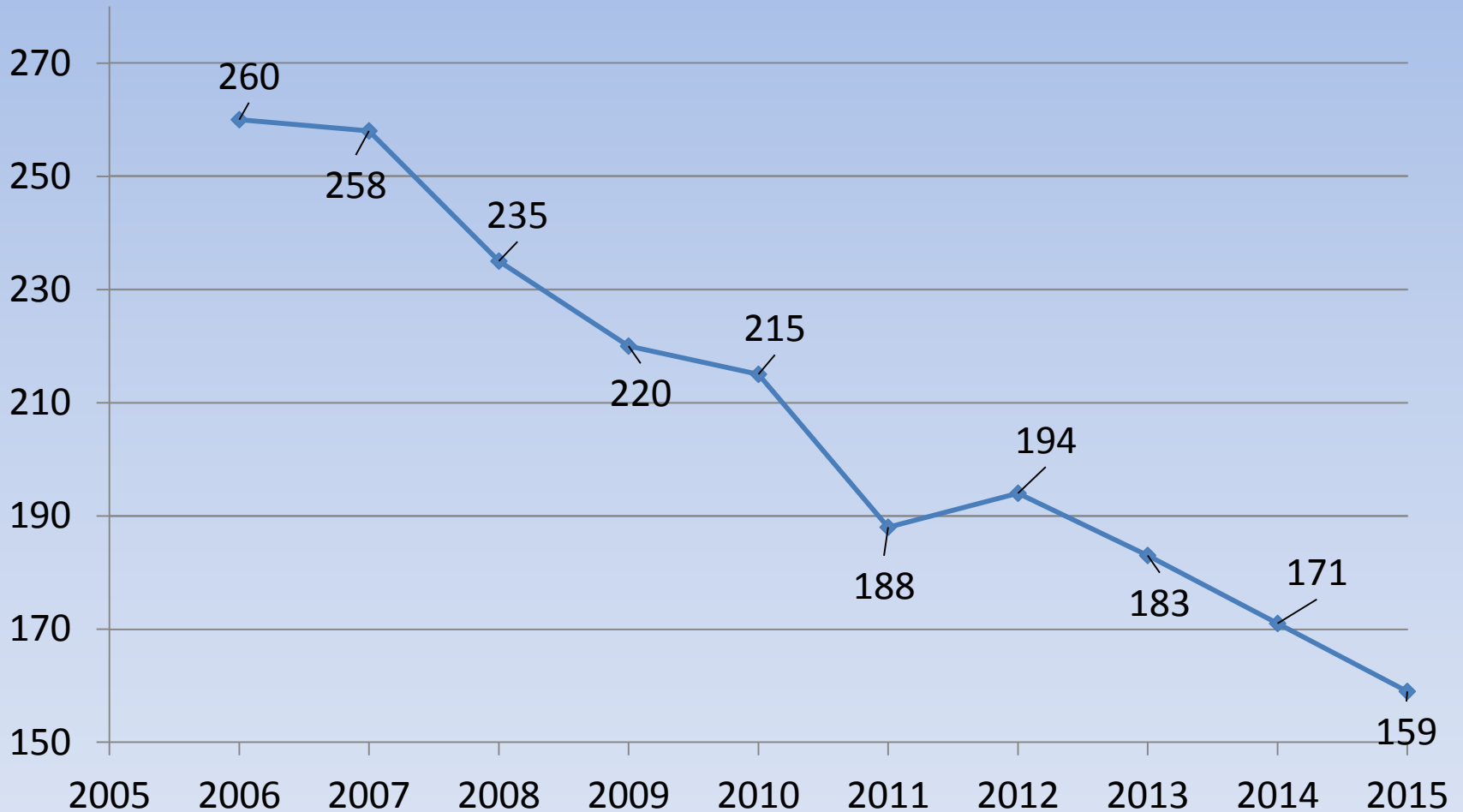
- Three Public Meetings
 - # 1 – Presentation from the School District
 - # 2 – Presentation from Community and Stakeholders
 - # 3 - Final review of information by DEC and decision

Enrolments



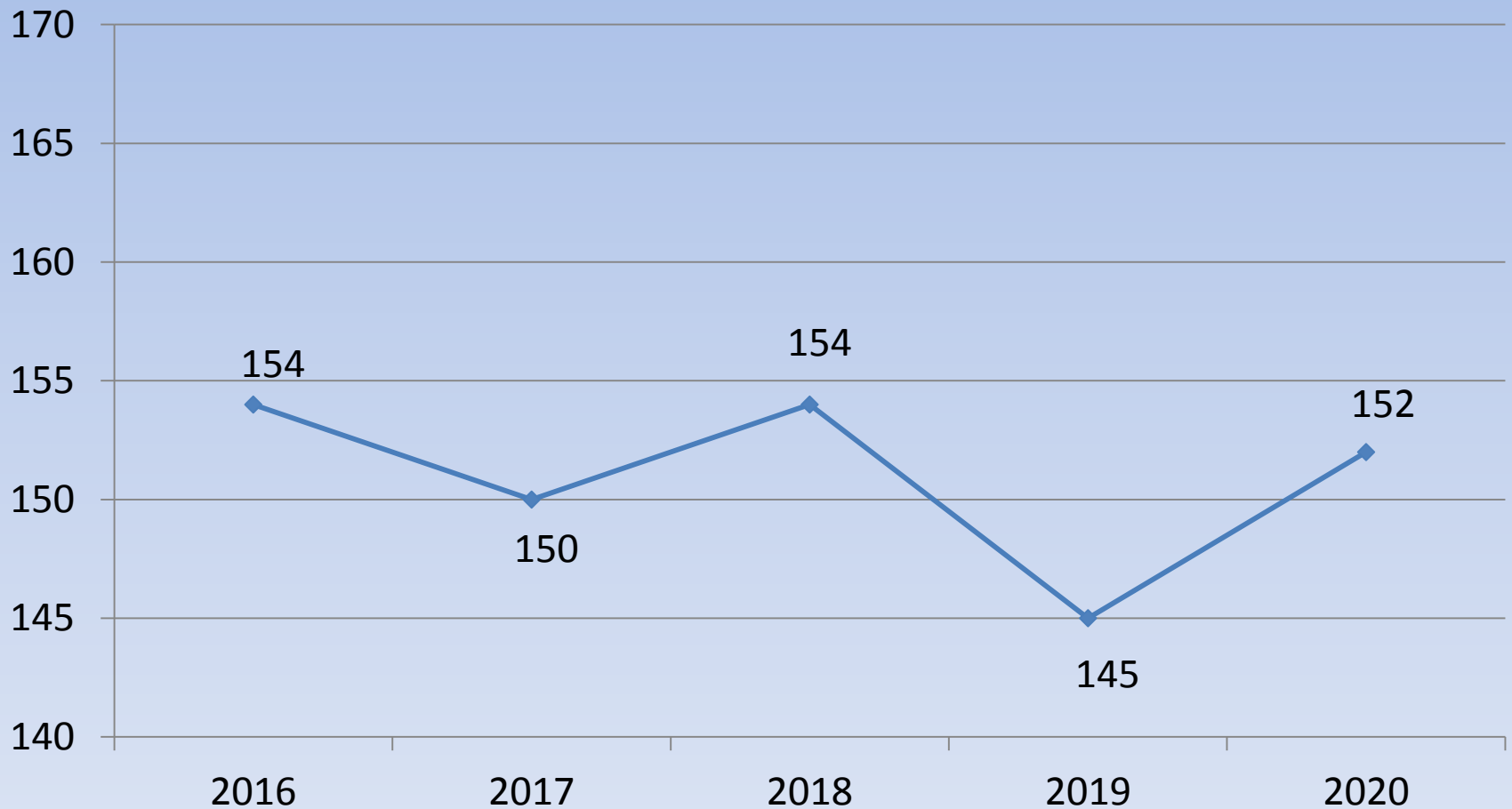
Historical Enrolment

North & South Esk Elementary School



Projected Enrolment

North & South Esk Elementary School



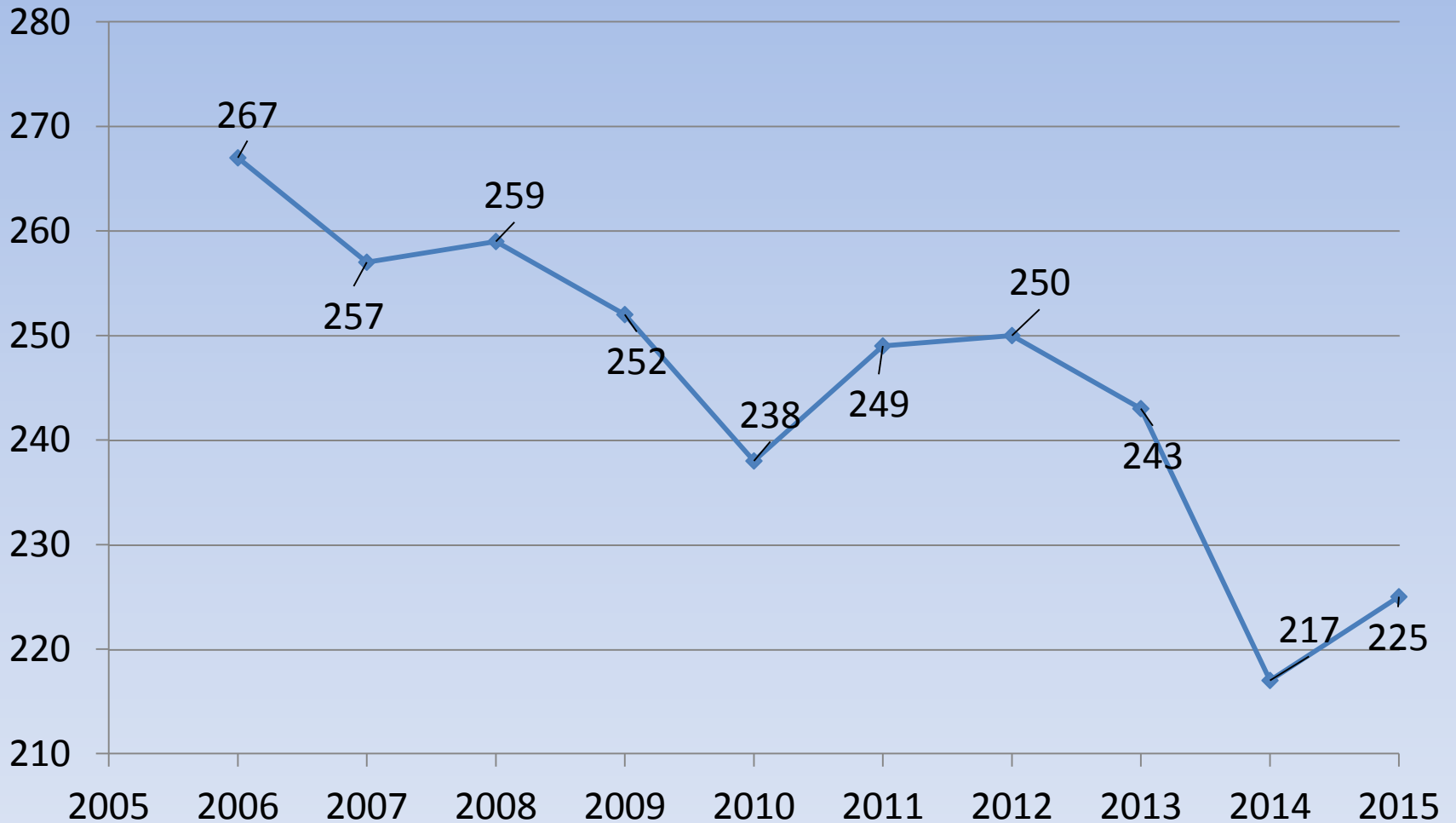
Functional Capacity

North & South Esk Elementary School

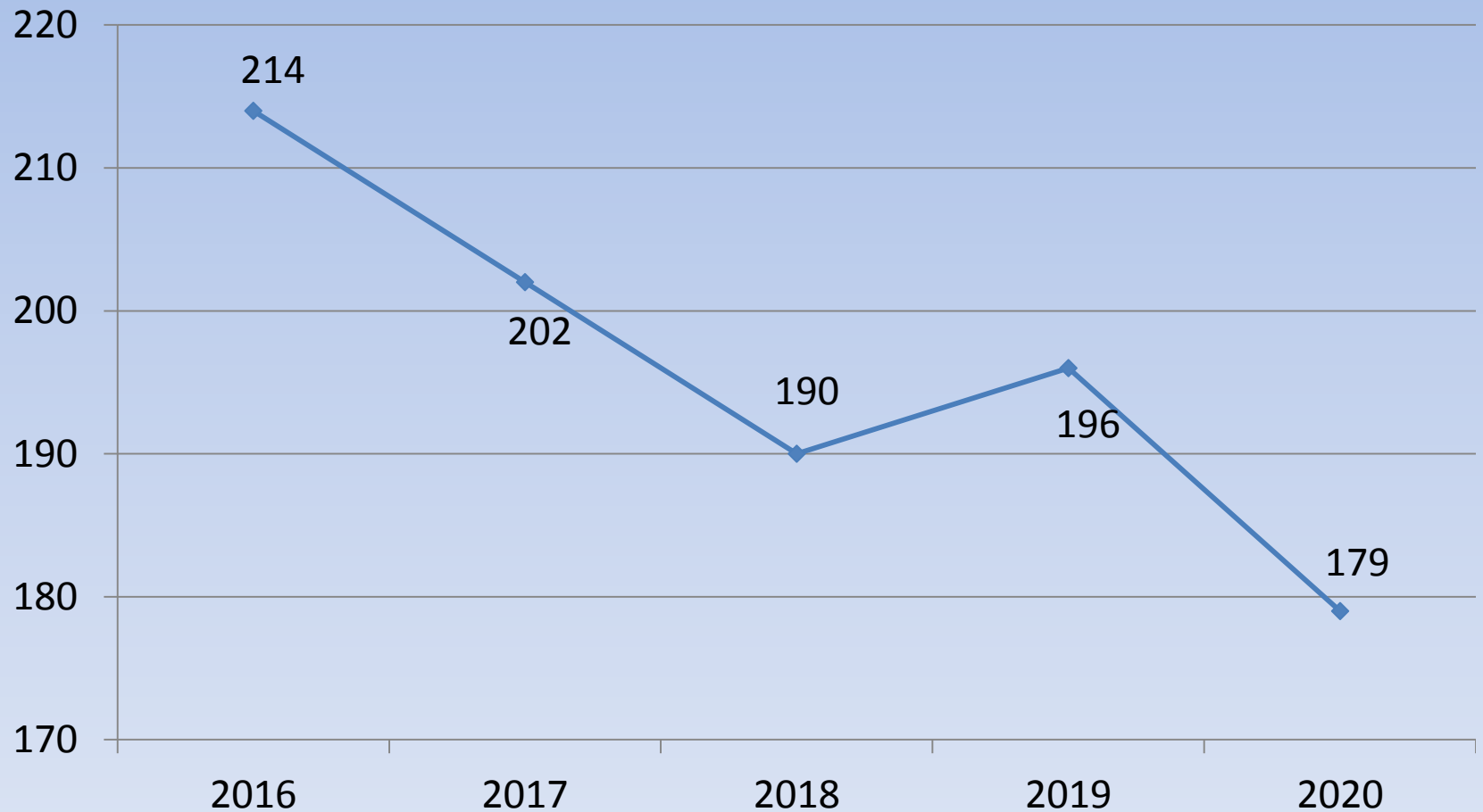
Functional Capacity Data	Student Enrolment September 2015	Number of Teaching Stations	School Capacity	Capacity Rating
Based on 24.7 students per class	159	18	445	35.7%

Historical Enrolment

North & South Esk Regional High School



Projected Enrolment North & South Regional High School



Functional Capacity

North & South Esk Regional High School

Functional Capacity Data	Student Enrolment September 2015	Number of Teaching Stations	School Capacity	Capacity Rating
Based on 32 students per class	225	25.6	742	30.3%

The number of teaching stations is 32. This has been reduced by 20% to reflect the impact of all types of course and variability in student course selection at the High School level.

Health and Safety Building Assessment



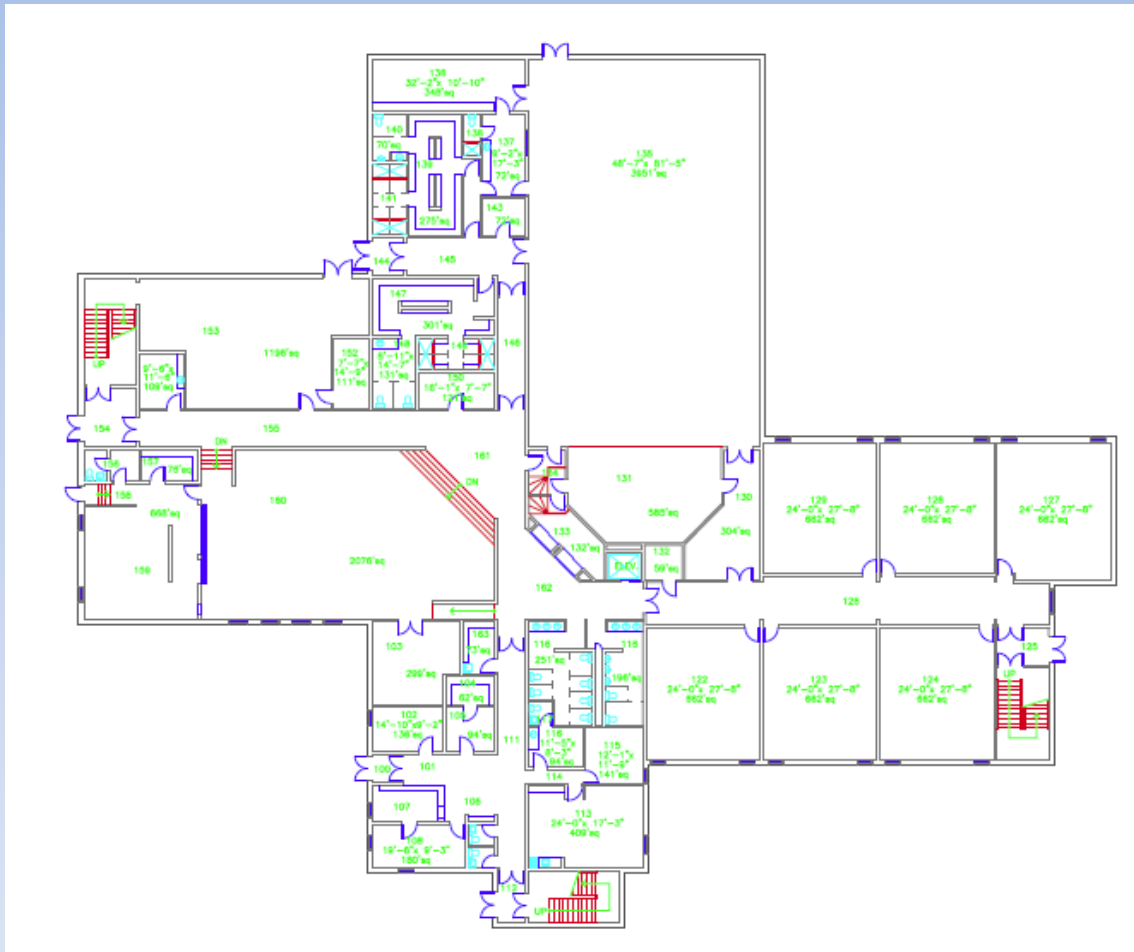
Structure

North & South Esk Elementary School

- The building envelope is constructed with steel frame, block walls and brick facing.
- Stairwell doors were fire rated in 2004.
- Exterior windows and doors were replaced in 2010 and 2011.
- Back parking lot and bus drop off zone were upgraded in 2012.

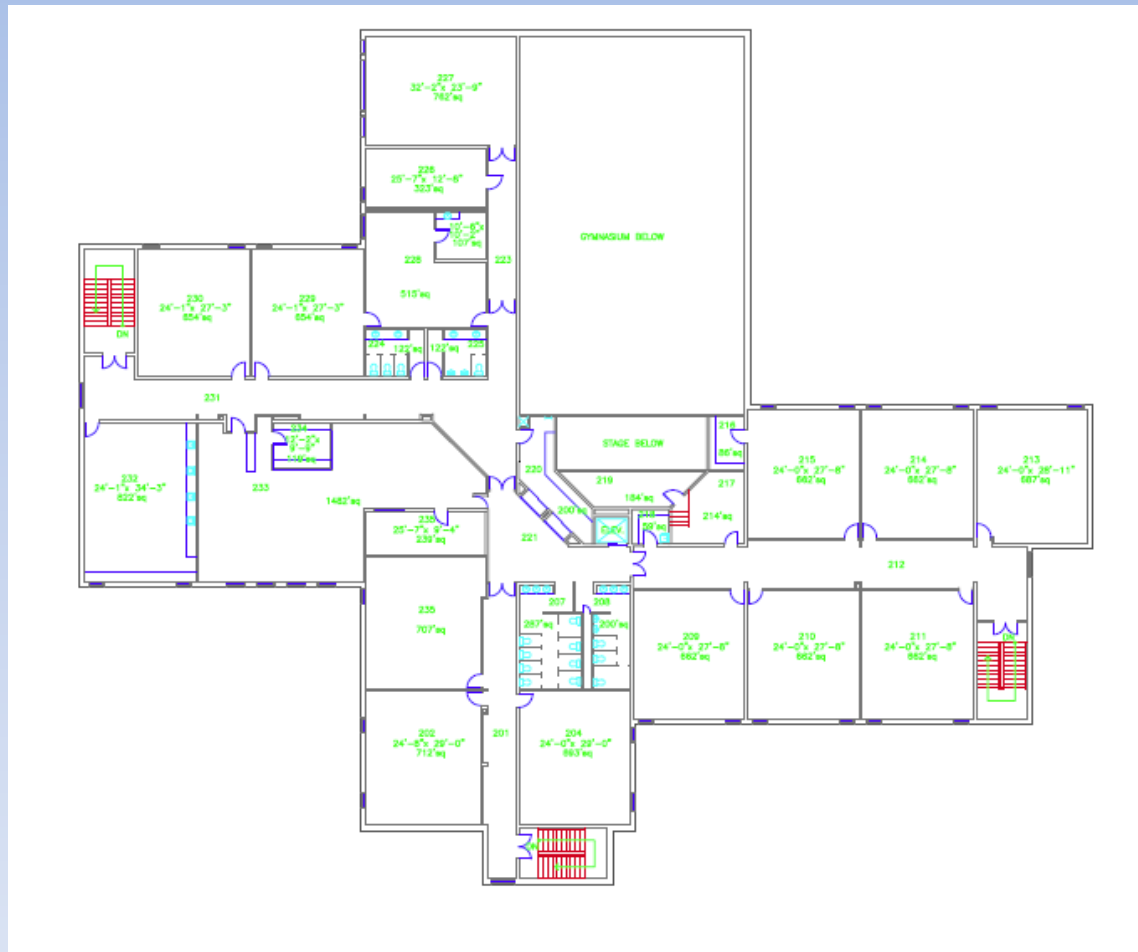
North & South Esk Elementary School

First Floor



North & South Elementary School

Second Floor



Fire Protection & Security

North & South Esk Elementary School

- There is an Edwards fire alarm system and sprinkler system in the school.
- Fire extinguishers and pull stations are located through the school.
- The exterior of the school is protected with a video surveillance system.
- There is an intrusion alarm in the school.

Domestic and Waste Water

North & South Esk Elementary School

- Water is supplied by a submersible pump from a drilled well and treated by a filtering and ultraviolet system.
- Waste water flows out to a treatment plant located at the high school.

Heating and Ventilation

North & South Esk Elementary School

- The climate control system is a combination of heat pumps, cooling tower, electric boiler and ventilation system.
- The systems can be remotely accessed by dial up through the internet. System is slower than a web based one.
- The cooling tower and ventilation system were upgraded in 2004.

Outstanding Capital Improvement Projects North & South Esk Elementary School

Scope of Work	Cost
Interior wall finishes	\$ 15,000
Roof replacement	\$ 300,000
Total	\$ 315,000

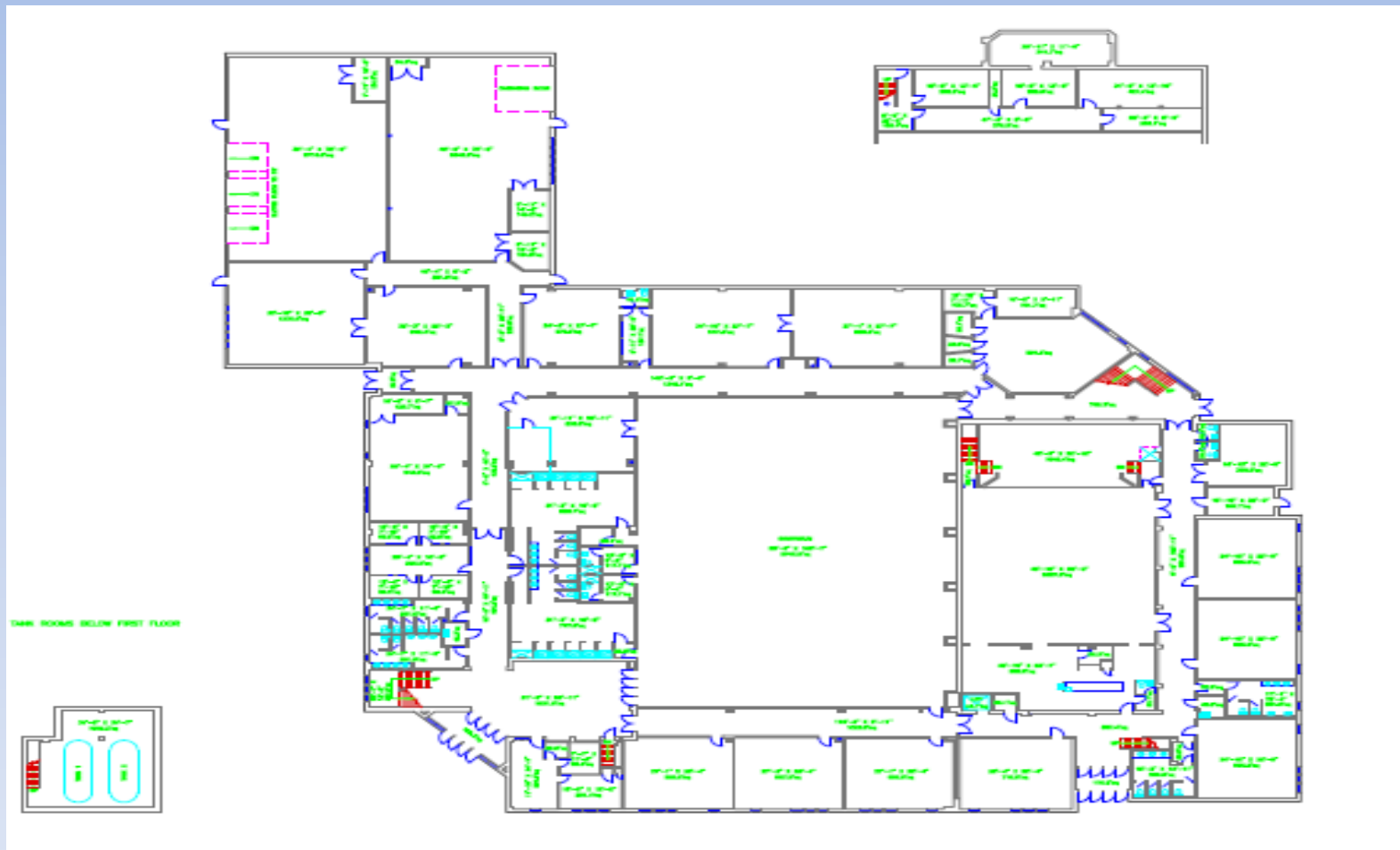
Structure

North & South Esk Regional High School

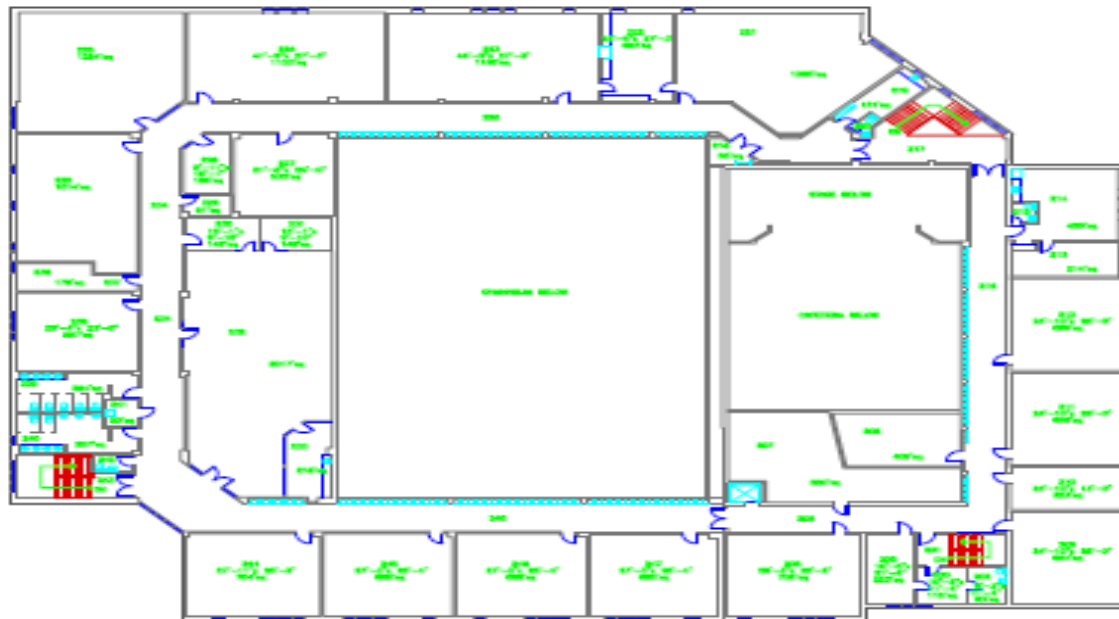
- The original school was built in 1947, with an addition in 1957.
- In 1992 there was a complete renovation and expansion, which included a new gymnasium, cafeteria, shops, science lab, classrooms and offices.
- The building envelope is constructed with of steel, with concrete block and brick and steel facing.
- Roofs were replaced over a 3 year period starting in 2013.

North & South Esk Regional School

First Floor



North & South Esk Regional School Second Floor



Fire Protection & Security

North & South Esk Regional High School

- There is an Symplex fire alarm system and sprinkler system in the school.
- Fire extinguishers and pull stations are located through the school.
- The school is protected with a video surveillance system.
- There is an intrusion alarm in the school

Domestic and Waste Water

North & South Esk Regional High School

- Water is supplied by a submersible pump from a drilled well and stored in a 10,000 gallon tank. The water is treated by a filtering and ultraviolet system.
- Waste water flows out to a treatment plant located on the school property.

Heating and Ventilation

North & South Esk Regional High School

- The school is heated with electric baseboard and duct heaters.
- Each classroom has the ability to control the flow of fresh air.
- The gymnasium and cafeteria have their own ventilation systems.
- Windows are operable and can be used to bring additional fresh air into the school.

Outstanding Capital Improvement Projects

North & South Esk Regional High School

Scope of Work	Cost
Replace piston on elevator	\$ 35,000
Total	\$ 35,000

Education Programs and Services



FTE Teacher Allocations Based on Provincial Staffing Formulas – NSEE

September 2015	North South Esk Elementary School
Classroom Teachers	10.0 FTE
Administration	0.6 FTE
Guidance	0.4 FTE
Resource	0.9 FTE
Total	11.9 FTE

FTE Teacher Allocations Based on Provincial Staffing Formulas – NSER

September 2015	North South Esk Regional High School
Classroom Teachers	16.3 FTE
Administration	0.9 FTE
Guidance	0.5 FTE
Resource	1.3 FTE
Total	19.0 FTE

Elementary Schools comparable

Student/Teacher Ratio – September 2015

	Total Number Student/Teacher	Student/Teacher
Rexton Elementary	236/19.6	12.1
Croft	169/13.4	12.6
Gretna Green	203/15.4	13.2
NSEE	160/11.9	13.4
St Andrews	291/19.6	14.9

Middle & High School comparable Student/Teacher Ratio – September 2015

	Total Number Student/Teacher	Student/Teacher
NSER	227/19	11.9
Dalhousie School (6-12)	317/26	12.2
Eleanor W Graham MS	180/14.4	12.5
Sugarloaf Senior HS	381/28	13.6
Superior MS	295/21	14.0

Other School Based Staff

September 2015

Classification	NSEE	NSER
Educational Assistant	8.0	4.0
School Administrative Assistant	0.83	1.0
Custodian	2.5	3.75
Library Worker	0.2	0.52
Total	11.53	9.27

Assessment Results

North & South Esk Elementary

Grade 5 Math

Year	NSEE	District	Province
2010-11	68.6%	67%	60.8%
2011-12	92.2%	64%	63%
2012-13	82.3%	58.4%	62.9%

Assessment Results

North & South Esk Elementary

Grade 2 Reading

Year	NSEE	District	Province
2010-11	80.8%	78.1%	80.3%
2011-12	87.2%	84.3%	79.3%
2012-13	84.5%	83.2%	79.5%
2013-14	95.5%	76.7%	77.5%

Assessment Results

North & South Esk Regional

Grade 7 Reading

Year	NSER	District	Province
2010-11	80.5%	67%	69.4%
2011-12	80%	74%	68.4%
2012-13	83.3%	78.5%	76.2%
2013-14	88.6%	76.7%	77.1%

Assessment Results

North & South Esk Regional

Grade 9 ELPA Writing

Year	NSER	District	Province
2010-11	83%	70.8%	78.9%
2011-12	70%	79.4%	82.2%
2012-13	88.3%	79.4%	82.4%
2013-14	85.7%	86.2%	88.2%

Assessment Results

North & South Esk Regional High

Grade 8 Math

Year	NSER	District	Province
2010-11	78.8%	64.5%	57.6%
2011-12	83%	61.6%	57.5%
2012-13	70%	63.8%	58.5%
2013-14	65.2%	59.4%	57.7%

Transportation



Transportation

- Currently in excess of 90% of students within the catchment area for the two schools are provided with bus transportation.
- There are 10 morning runs served by 9 buses. The earliest pick up for a student attending NSEE or NSER is at 7:22 am.
- Longest ride in for an NSEE student is 50 minutes and 45 minutes for a NSER student.

Transportation- continued

- In the afternoon there are 14 runs covered by 9 buses.
- The longest ride out time for an NSEE student is 47 minutes and it is 48 minutes for an NSER student.

Finances



Operation Costs 2014-15

Category	NSEE	NSER
Salaries – all staff	\$ 1,354,169	\$ 1,749,205
Instructional Expenses	15,381	20,559
Telephones	3,431	5,213
Electricity & Water	82,586	102,879
Heating Fuel		
Minor Repairs	15,219	15,162
Snow & Garbage Removal	11,917	11,917
Cleaning Supplies	3,159	4,093
Rental		
Total Operating Costs	\$ 1,485,862	\$ 1,909,028
Costs per student	\$ 8,689.25	\$ 8,797.36

Cost Comparison Per Student Basis – Elementary Schools

School	Operation Costs	# of students September 2014	Cost per student
St Andrews Elementary	\$ 2,246,704	285	\$ 7,883.17
Gretna Green Elementary	\$ 1,572,831	197	\$ 7,983.91
Rexton Elementary	\$ 2,073,005	259	\$ 8,003.88
North & South Esk Elementary	\$ 1,485,862	171	\$ 8,689.25
Croft Elementary	\$ 1,548,505	174	\$ 8,899.45

Cost Comparison Per Student Basis – Middle & High Schools

School	Operation Costs	# of students September 2014	Cost per student
Superior Middle	\$ 2,311,808	316	\$ 7,315.85
Sugarloaf Senior High	\$ 2,992,787	374	\$ 8,002.11
Dalhousie School	\$ 2,971,424	350	\$ 8,489.78
Eleanor W Graham	\$ 1,588,518	181	\$ 8,776.34
North & South Esk Regional	\$ 1,909,028	217	\$ 8,797.36

Options



Options

- # 1 – Status quo, leave both schools as is.
- # 2 – Move grade 6 students to NSER making it a 6-12 school and NSEE would be a K-5.
- # 3 – Move all students to NSER creating a K-12 school and close NSEE.

Options - continued

Option # 1 – Maintain Status Quo

- Both schools are in excellent condition and they are well maintained. The capital improvement projects are minimal for the two schools.
- Operational costs for the schools are higher relative to other schools in district.

Options continued

Option # 2 - Option # 2 - Move Grade 6 Students to NSER making it a 6-12 school with NSEE becoming a K-5 school

- This configuration would see NSEE as an elementary school which would align the school with others in the district and the province.
- NSER would be a 6-12 and it would align itself with other schools in the districts and the province and would allow middle school students and high school students to be able to participate with their peers from other schools in age appropriate activities and events.

Options continued

Questions: Will the schools be sustainable in the future?

Projected student enrolment in 2017-18

- NSEE 132 students 29.6% occupancy
- NSER 230 students 31% occupancy

Projected student enrolment in 2020-21

- NSEE 130 students 29.6% occupancy
- NSER 201 students 27.1% occupancy

Options - continued

Option # 3 – Close NSEE and Move Students to NSER making NSER a K-12 School

- By closing NSEE and moving all students to NSER, the student population is projected to be approximately 331 students in 2020-21, which is 44.6% capacity.
- Operational costs would be reduced by approximately \$ 110,000 if NSEE was closed and there would be a decrease of at least \$ 120,000 in salaries as some positions would be eliminated with a net savings of at least \$ 230,000 per year.

Impact on Community



Impact on Community

- Sunny Corner is a rural community located approximately 27 km from the City of Miramichi.
- Metepenagiag is a First Nation Community located adjacent to Sunny Corner. They have a K-6 school which acts as feeder school for NSER.
- According to Stats Canada, the population in Sunny Corner decreased from 858 in 2006 to 749 in 2011, a decrease of 12.7%.
- In 2011, 88.8% of the residents of Sunny Corner were over 15 years of age compared to 84.9% in the New Brunswick.

Impact on Community

- In option # 1 and # 2 there would be minimal impact on the community as # 1 is status quo and # 2 is a reconfiguration of grade between schools and both schools remain open.
- With option # 3 and a closure of NSEE, there would be a significant impact on the community.
- According to district records there were four individuals or groups who used NSEE consistently during the 2014-15 school year offering various activities. A number of these were weekly activities.
- As well, there is an after school program located at NSEE which provides an excellent service to the community.

Impact on Community

- In the 2014-15 school year, NSER was used by 20 individuals or groups. A portion of the usage was for weekly activities.
- If option # 3 was selected, NSER may not be able to accommodate all the after hours use of the community groups and individuals who currently use both schools.
- The after hours use of the facilities does confirm the schools are the hub of the community.

Impact on Community

- In all options, it would be anticipated that parental involvement and access would remain the same as it currently is.
- Partnerships between the community and schools in option # 1 and # 2 would probably remain the same.
- With option # 3, there may be less stress on community partners as there would only be one school to partner with.

Impact on Other Schools



- There would be no impact on other schools with option 1 – status quo.
- With option # 2, moving grade 6 to NSER, each school would need to adapt to the changing environment.
- With option # 3, closing NSEE, there would be a significant impact on NSER as the school would need to be reorganized to ensure boundaries that are developmentally appropriate for elementary, middle and high are present.

Opportunities



Opportunities – Option # 2

- If option # 2 is selected, students in Grade 6 will have the opportunity to be part of the middle school culture and be able to participate in middle school events and activities as other grade 6 students in the district are able to do.
- Space would still be available in each school to accommodate more students should the Sunny Corner area see an increase in population.

Opportunities – Option # 3

- As part of a larger staff at a new school, teachers would have the opportunity for more personal growth and benefit from a vast network of best practices.
- Exposure to a more diverse teaming experience.
- Teachers would be able to offer specialized instruction in their areas of expertise, such as guidance, resource, music, physical education.
- Potential for more student collaboration as part of a larger school.

Opportunities Option # 3 continued

- Combined per student funding for two schools, consolidated to one school, giving Administration more flexibility to meet the needs of the students.
- Leadership opportunities for older students to work with younger ones.
- Potential to leverage more from partnerships with community with one school as opposed to two schools.

Economic Development



Economic Development

- There are a number of small and medium sized businesses in Sunny Corner and the surrounding area.
- Residents of the area commute to Miramichi for shopping and some would commute for work.
- Population in the Sunny Corner area has been decreasing, which could be directly linked to the closure of the mill and the mines.

Economic Development

- Federal Government Payroll Center is currently under construction in Miramichi East. This could lead to future residential development in the Sunny Corner area.

Economic Development

- Opportunities New Brunswick was contacted regarding potential economic development in the area, however, they could not confirm or deny if they were working on any files.

Next Steps

- Response presentations to be done by community stakeholders on November 4th, 6:30 pm at NSER.
- October 26th is last date to register to be included on the agenda for the 4th. Please see Brenda Dunnett to pick up a card with my contact information on it.
- Report to the District Education Council
- Decision by District Education Council – DEC meeting November 16th, 5:30 pm at the Lord Beaverbrook School in Campbellton (video streamed to NSER).

Questions